

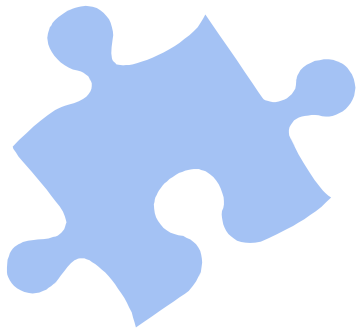
Roseville EGIS - Fitting the Pieces Together

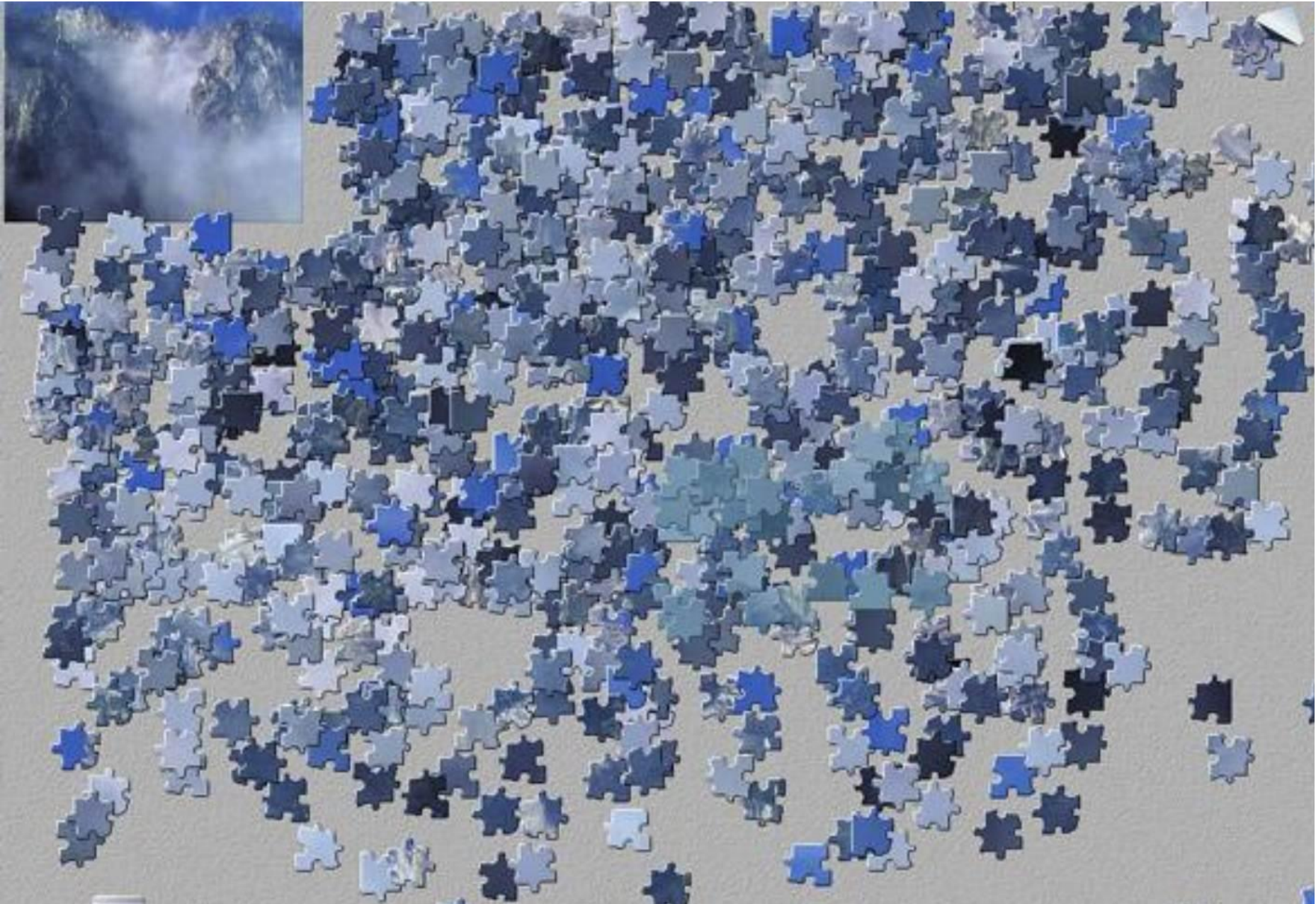


Objectives

Describe the BIG Picture

Assemble some pieces

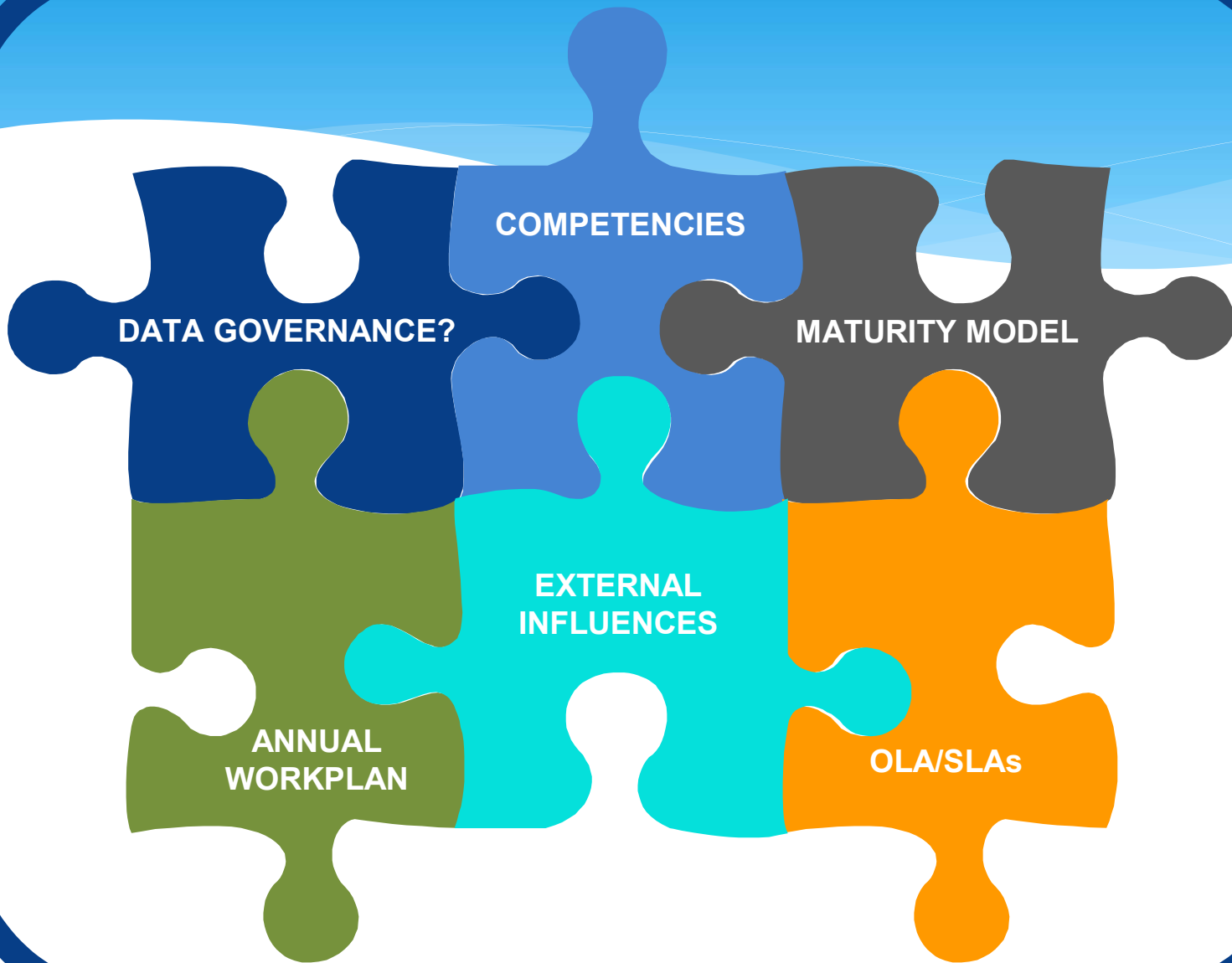




VISION

VISION

VISION



DATA GOVERNANCE?

COMPETENCIES

MATURITY MODEL

ANNUAL
WORKPLAN

EXTERNAL
INFLUENCES

OLA/SLAs

VISION

VISION

VISION

Vision - our completed puzzle

Deriving knowledge from geographic data to advance and differentiate the City of Roseville.



Why?

~~5~~ 3 pieces...where do they fit?

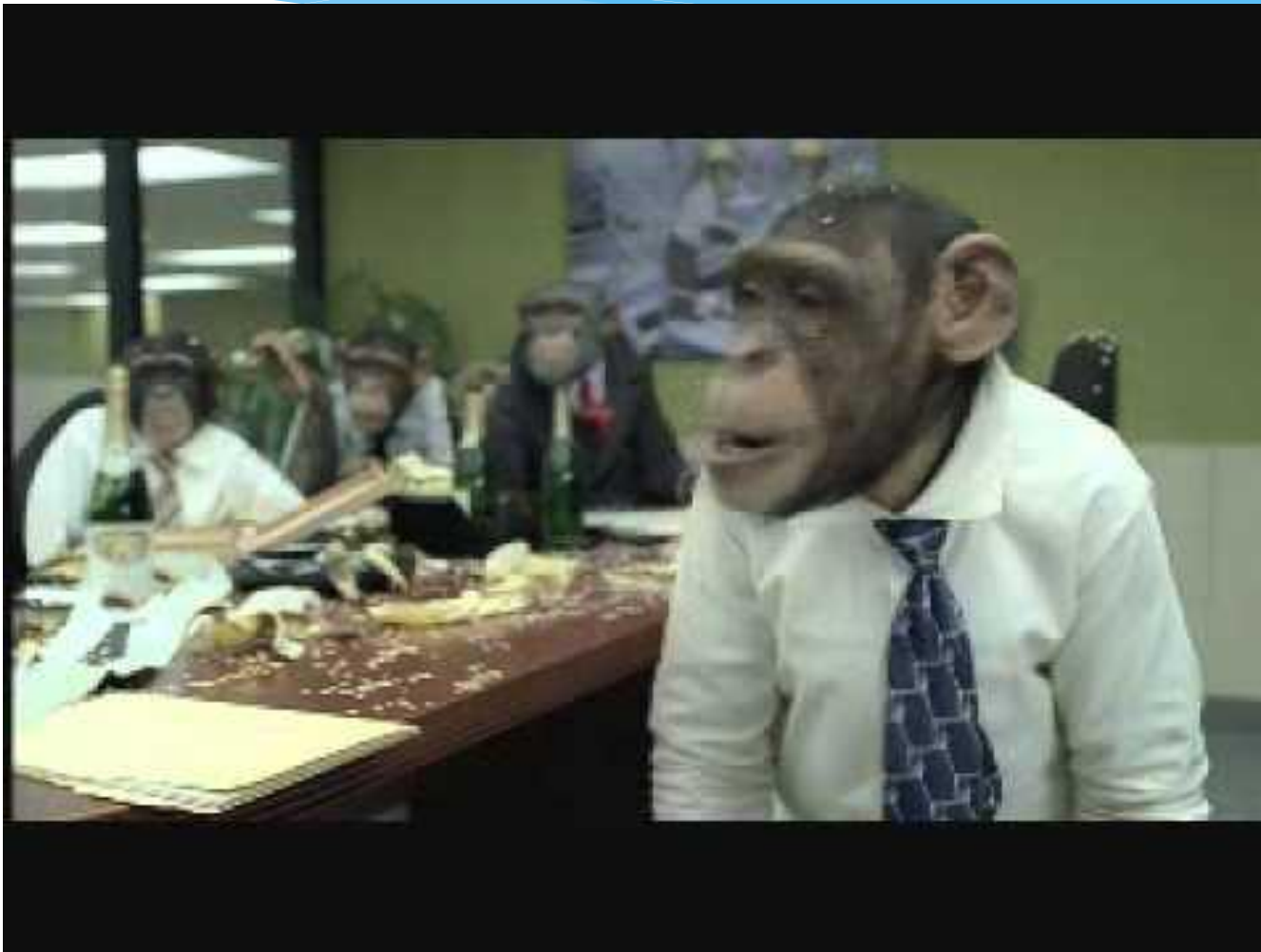


Competencies - skilled people are necessary to achieve our vision

OLA/SLAs - our architecture has gotten complicated, and complicated has costs

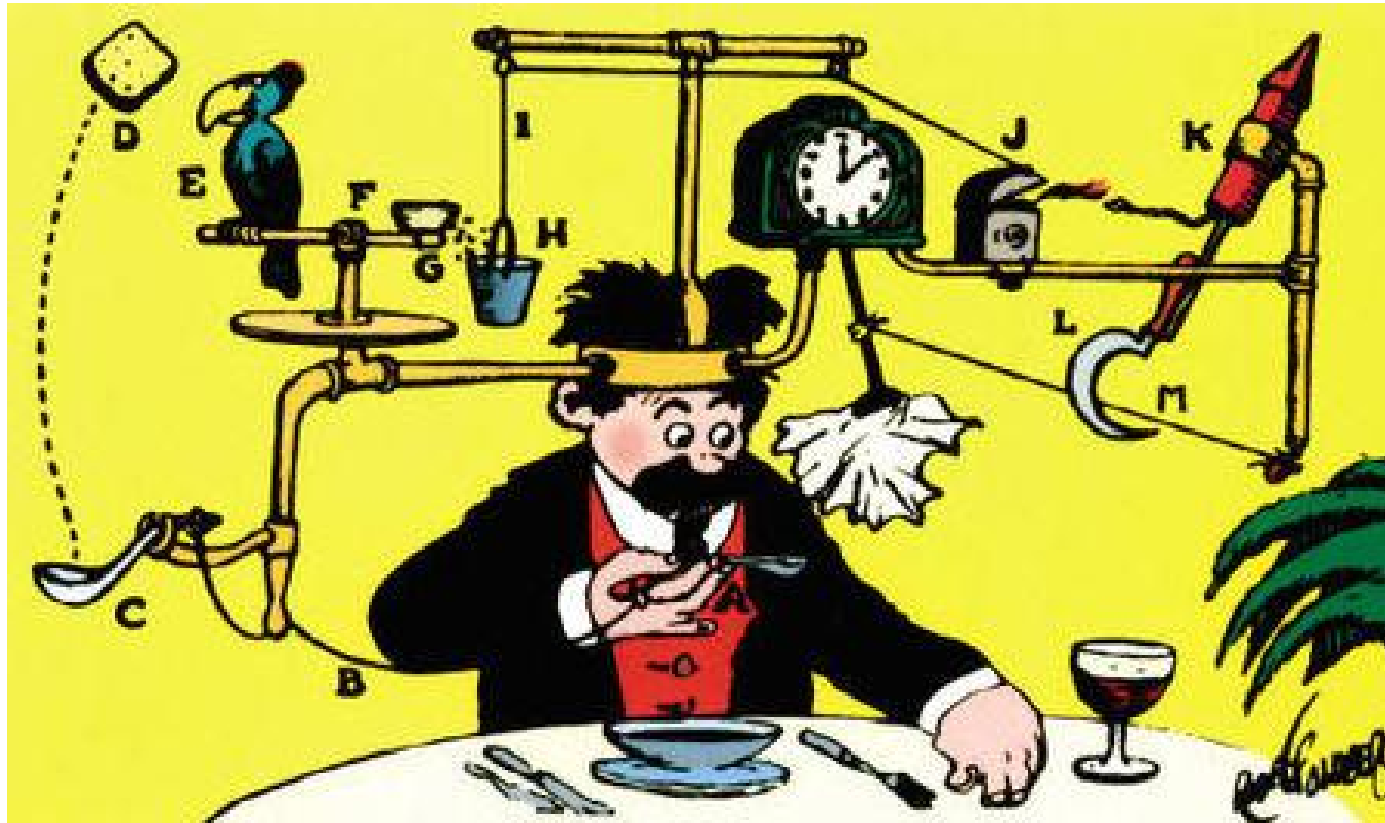
External Influences - have a lot to do with what we do, embrace them not fight them

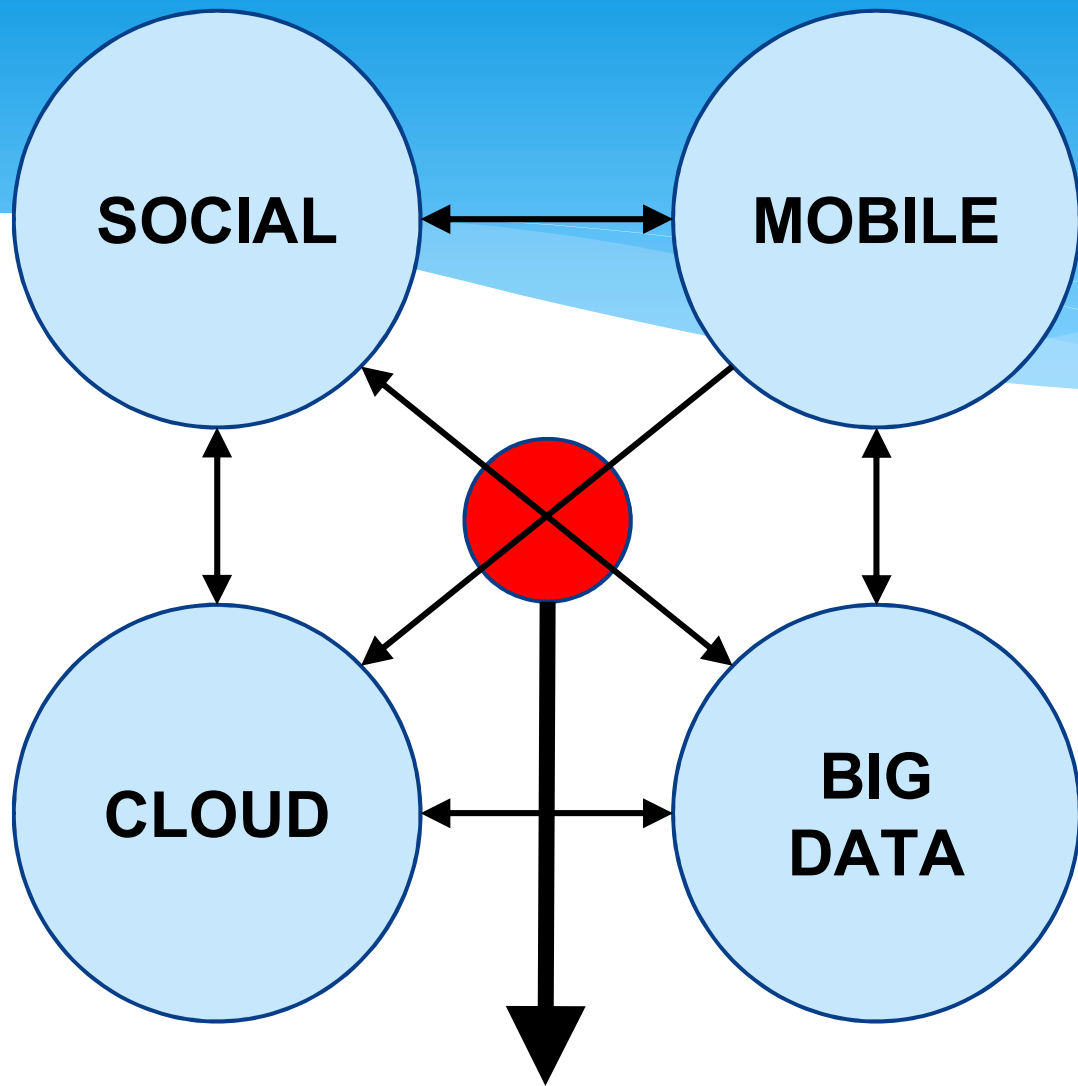
Skilled people are necessary



com·pli·cat·ed [kom-pli-key-tid]

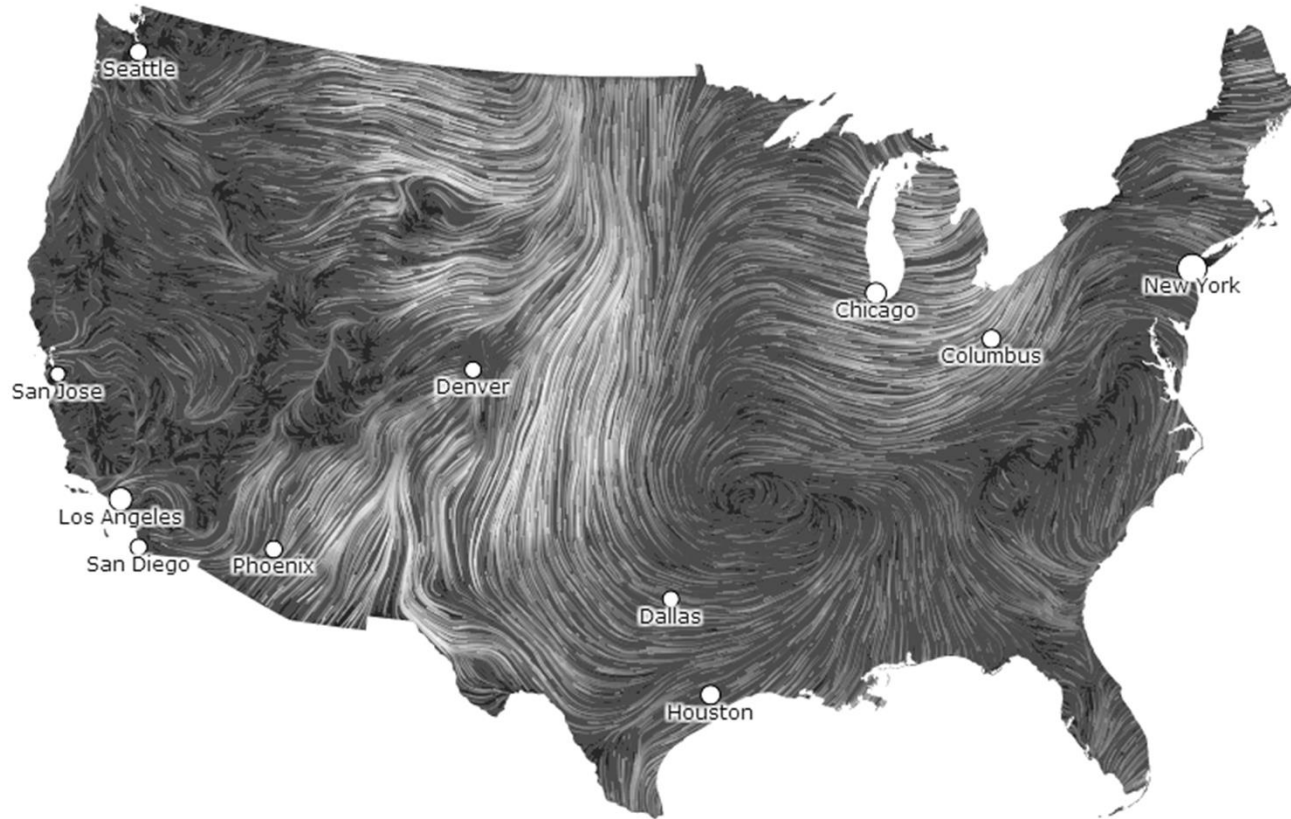
adjective - composed of elaborately interconnected parts
complicated apparatus for wiping your mouth.





DIGITAL EPICENTER

Mapping the Wind



Parting Thoughts...



PROBLEM SOLVING FLOWCHART

