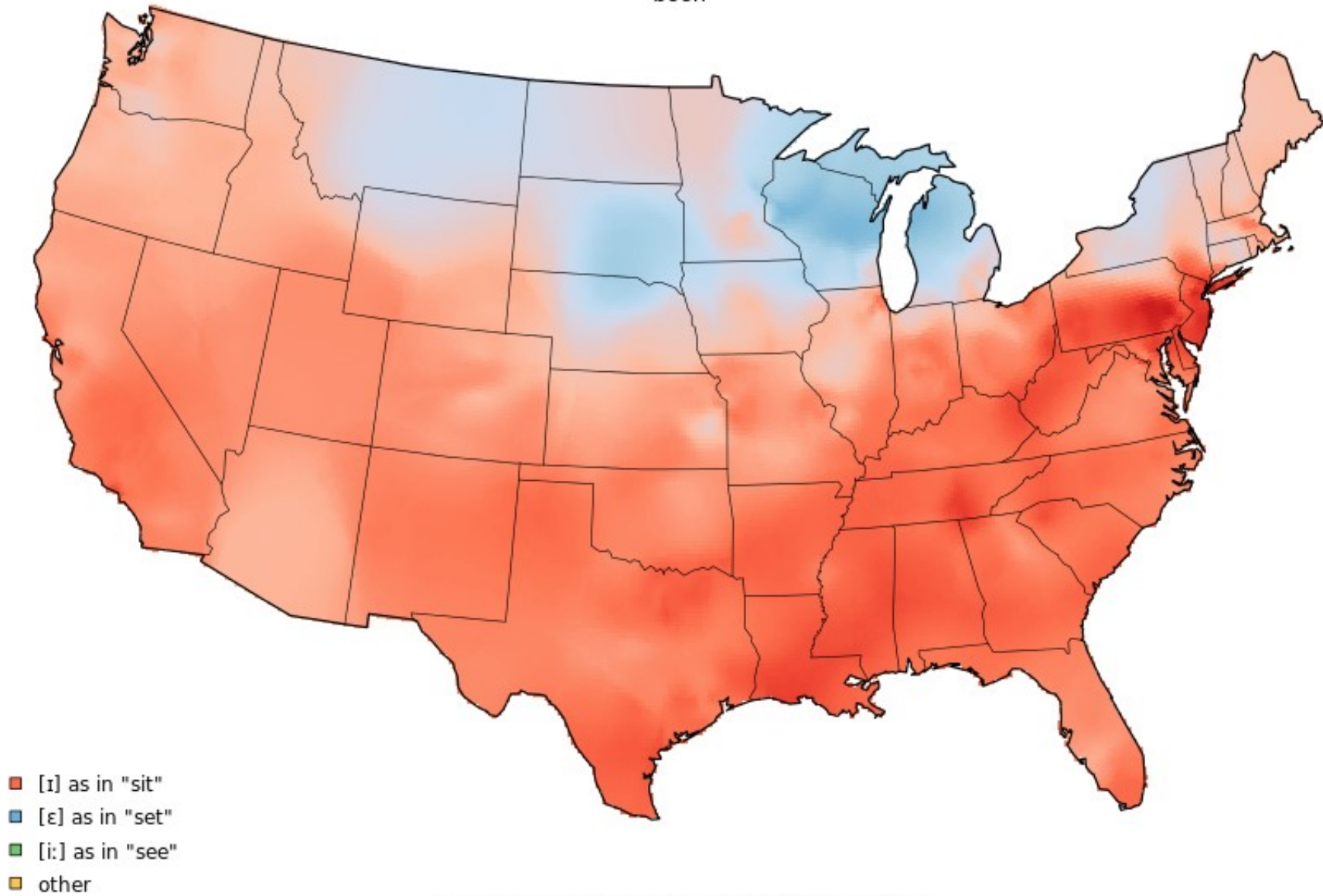


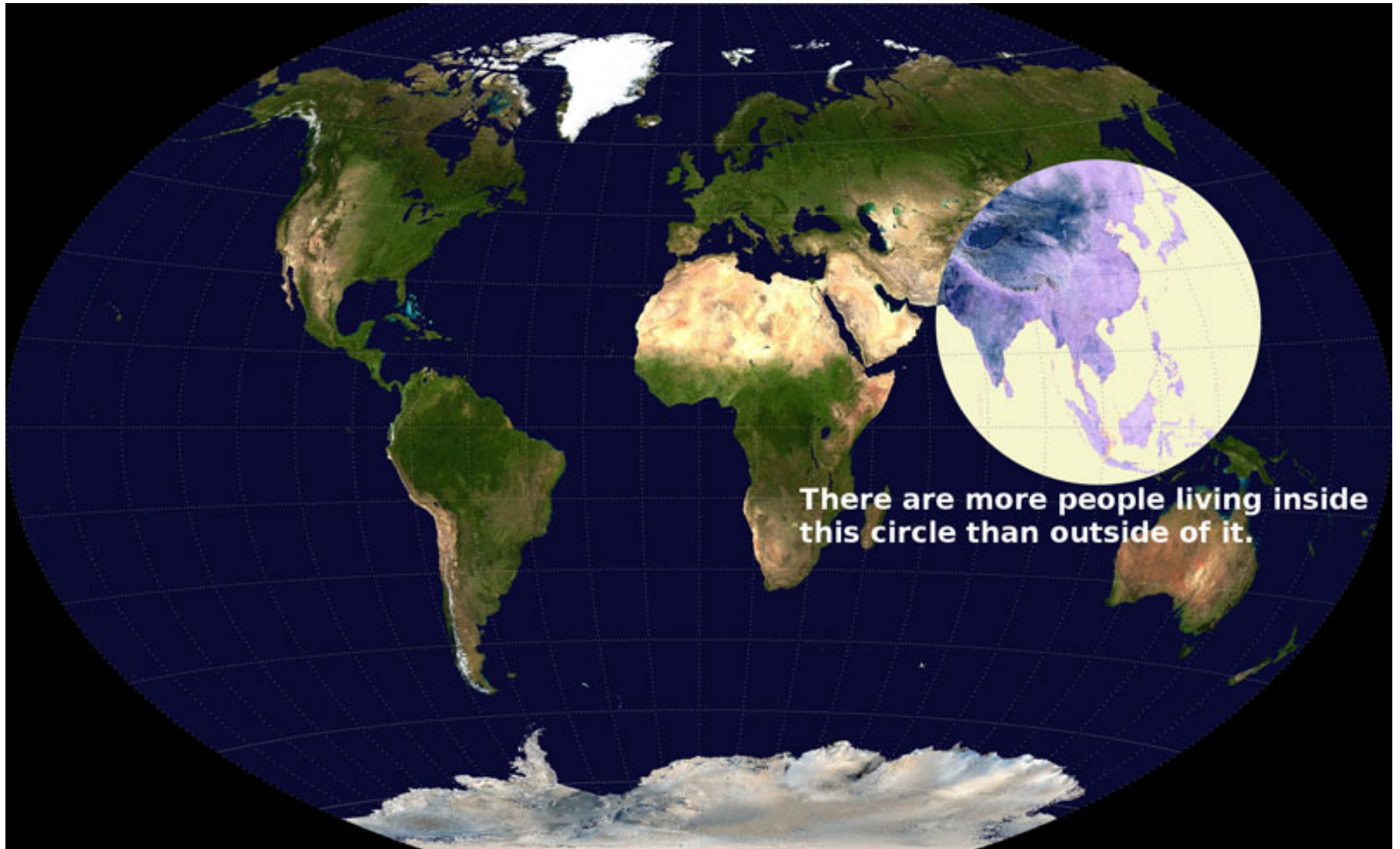
Rocklin GIS Forum

October 15, 2013



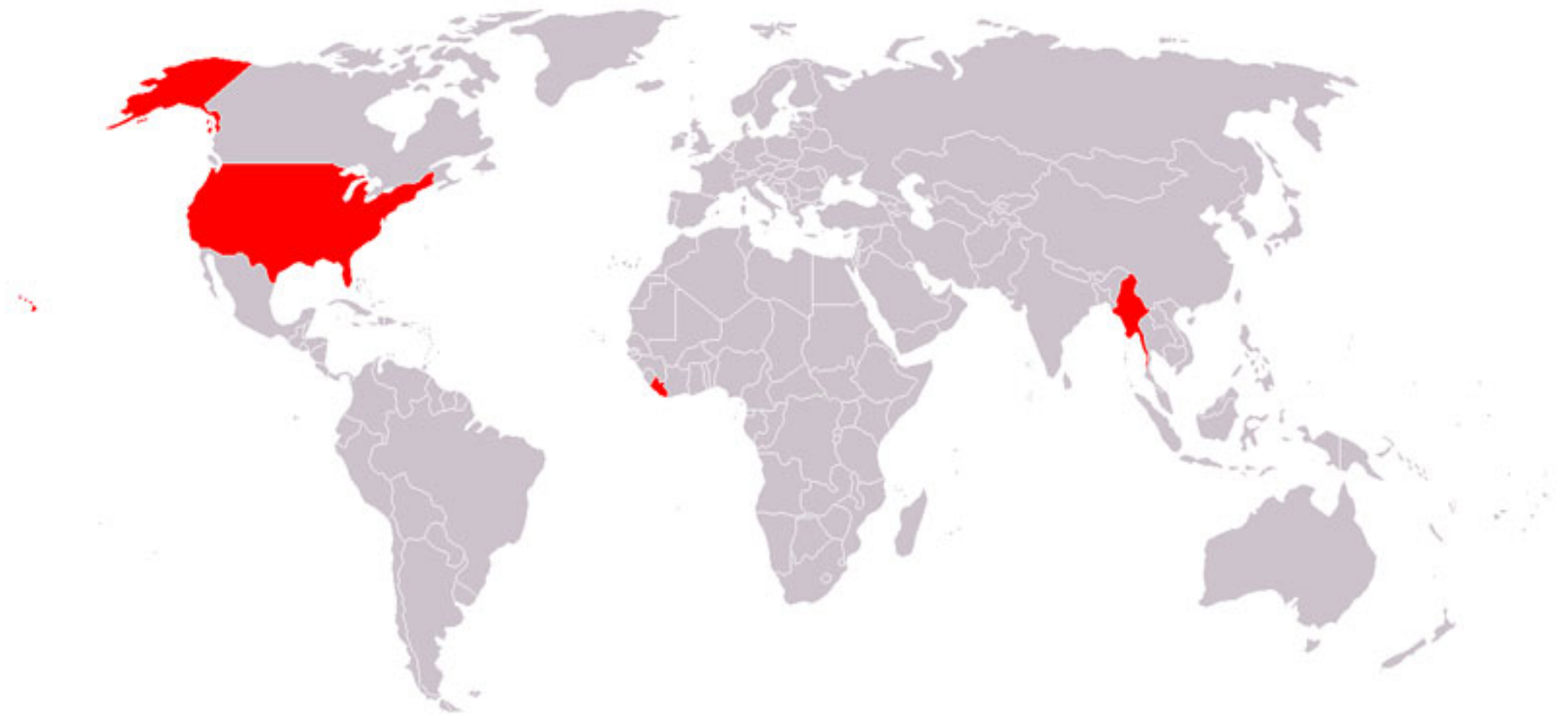
been





There are more people living inside this circle than outside of it.

Countries Not Using the Metric System





Vision

Deriving knowledge from geographic data to advance and differentiate Roseville.

Mission

Adding value and creating solutions through analysis, innovation, and technology.



GIS Growth Areas

- Location/Business Analytics
 - Improving City Services
 - Community Outreach
 - Economic Development
- Street Routing
- Enterprise Asset Management

GIS Applications and Uses

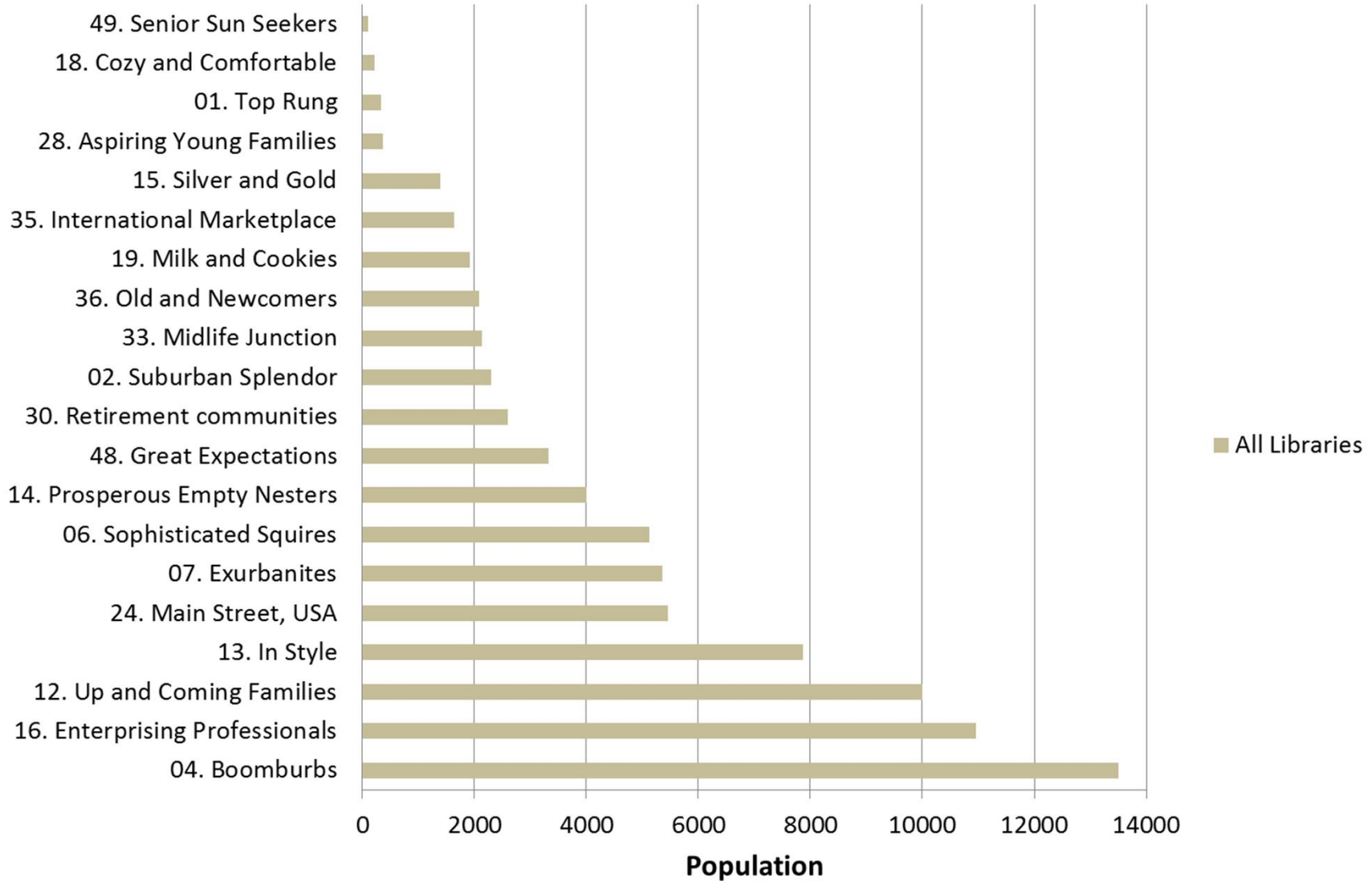
- Public Safety - E911 addressing/routing, AVL/GPS, crime analysis, fire incident analysis, standards of cover, floodplain management, EOC
- Planning/Development - permits, specific planning, land use, zoning, legal notifications, development activity
- Public Works - traffic counts, collisions, pavement management
- Finance – special districts (LLDs, CFDs)
- Utilities – modeling, mobile/mapbooks

All ESRI/partner software and solutions

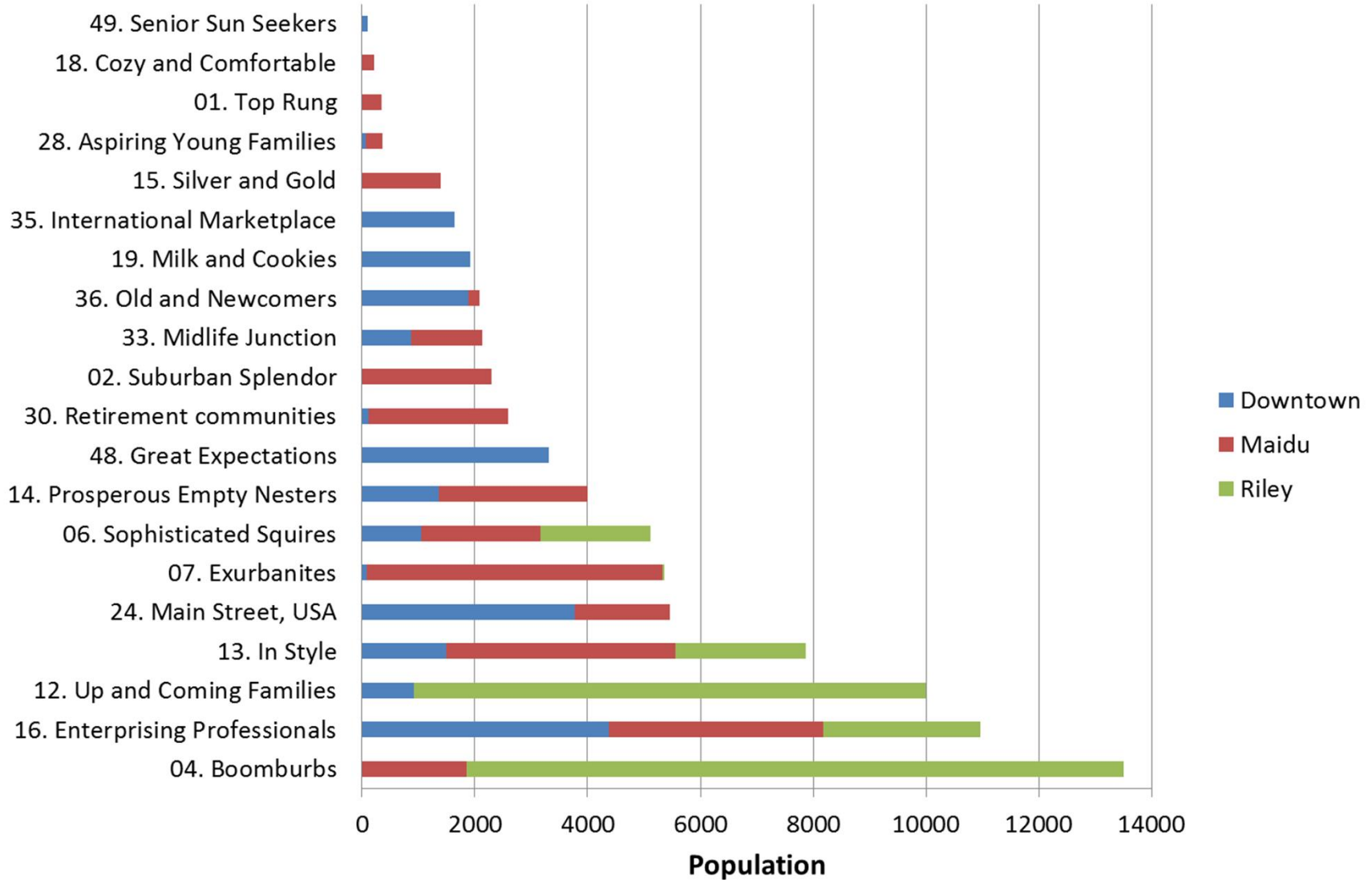
Physical and virtual infrastructure

Also looking at cloud infrastructure (Amazon)

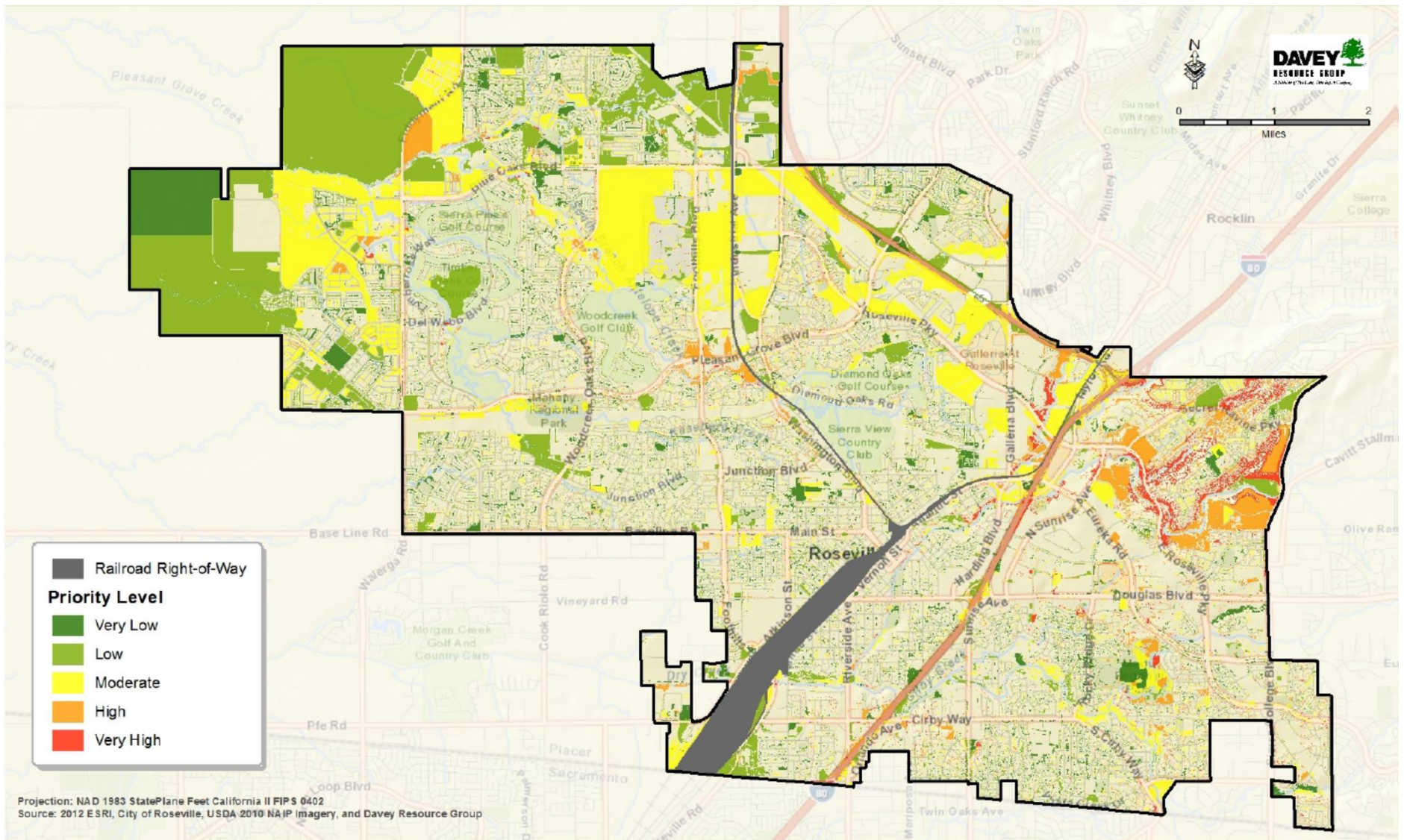
Library Segmentation 10 Minute Drive Time - All Library Locations



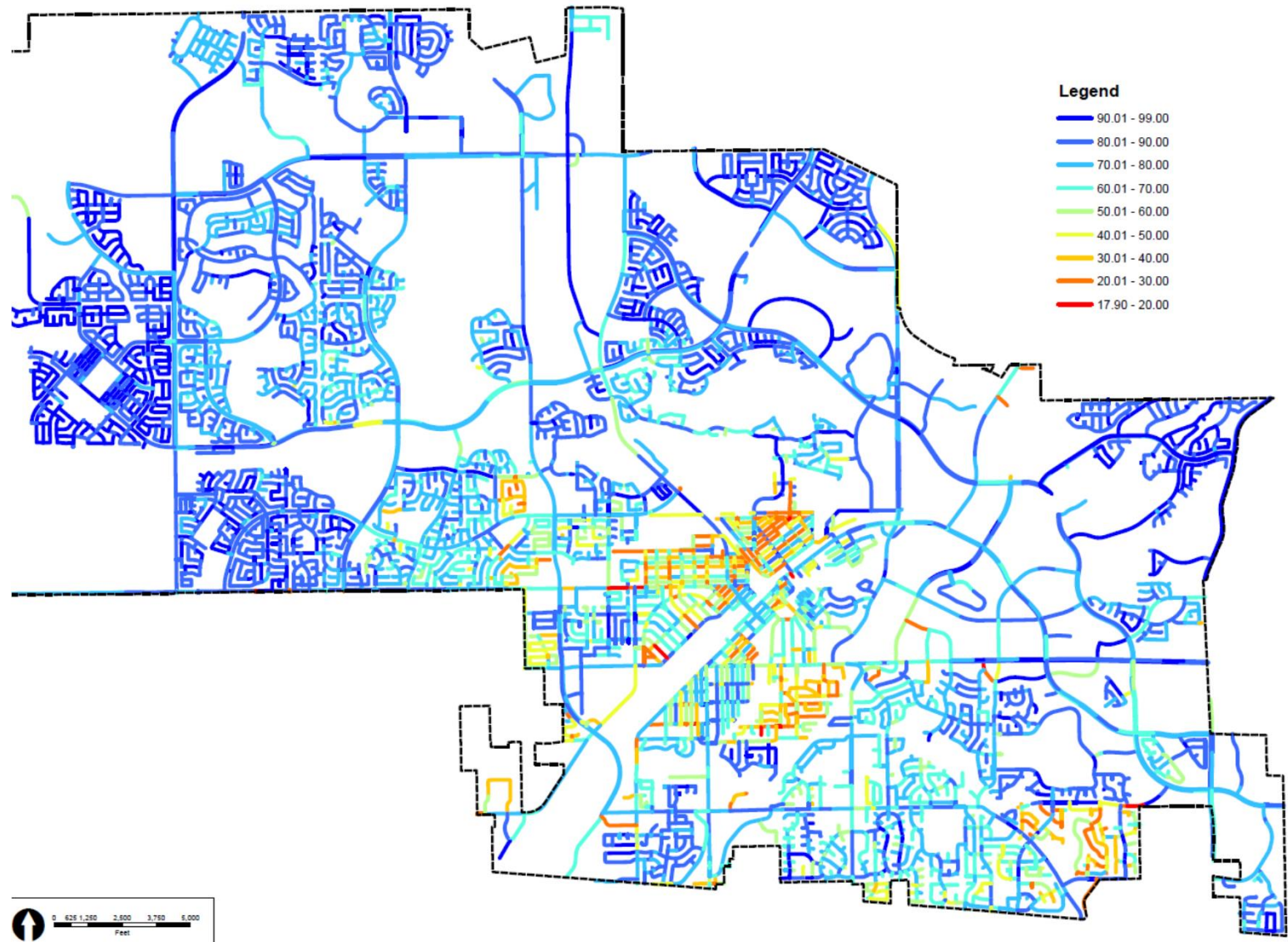
Library Segmentation 10 Minute Drive Time - By Location



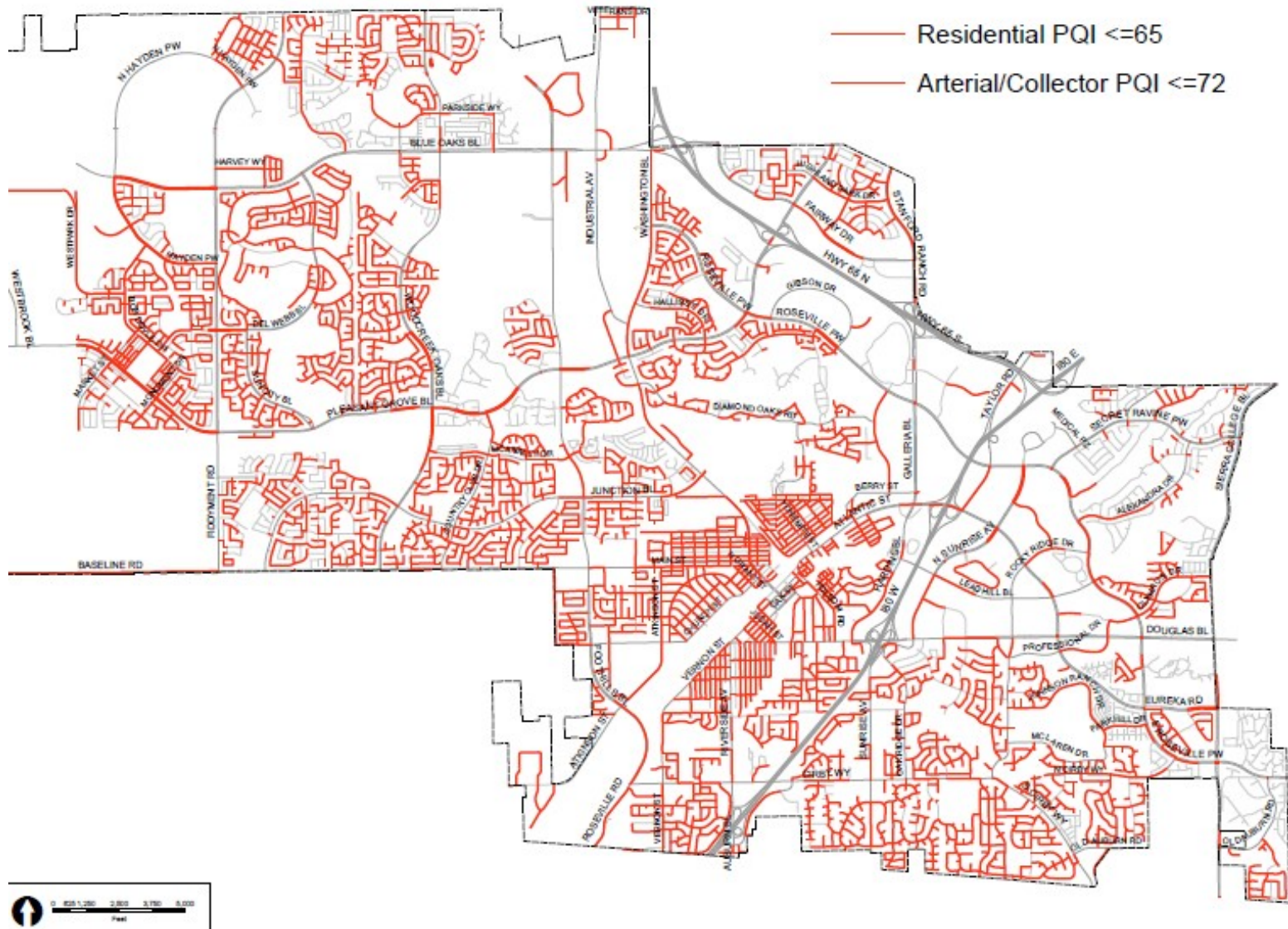
Priority Tree Planting Sites



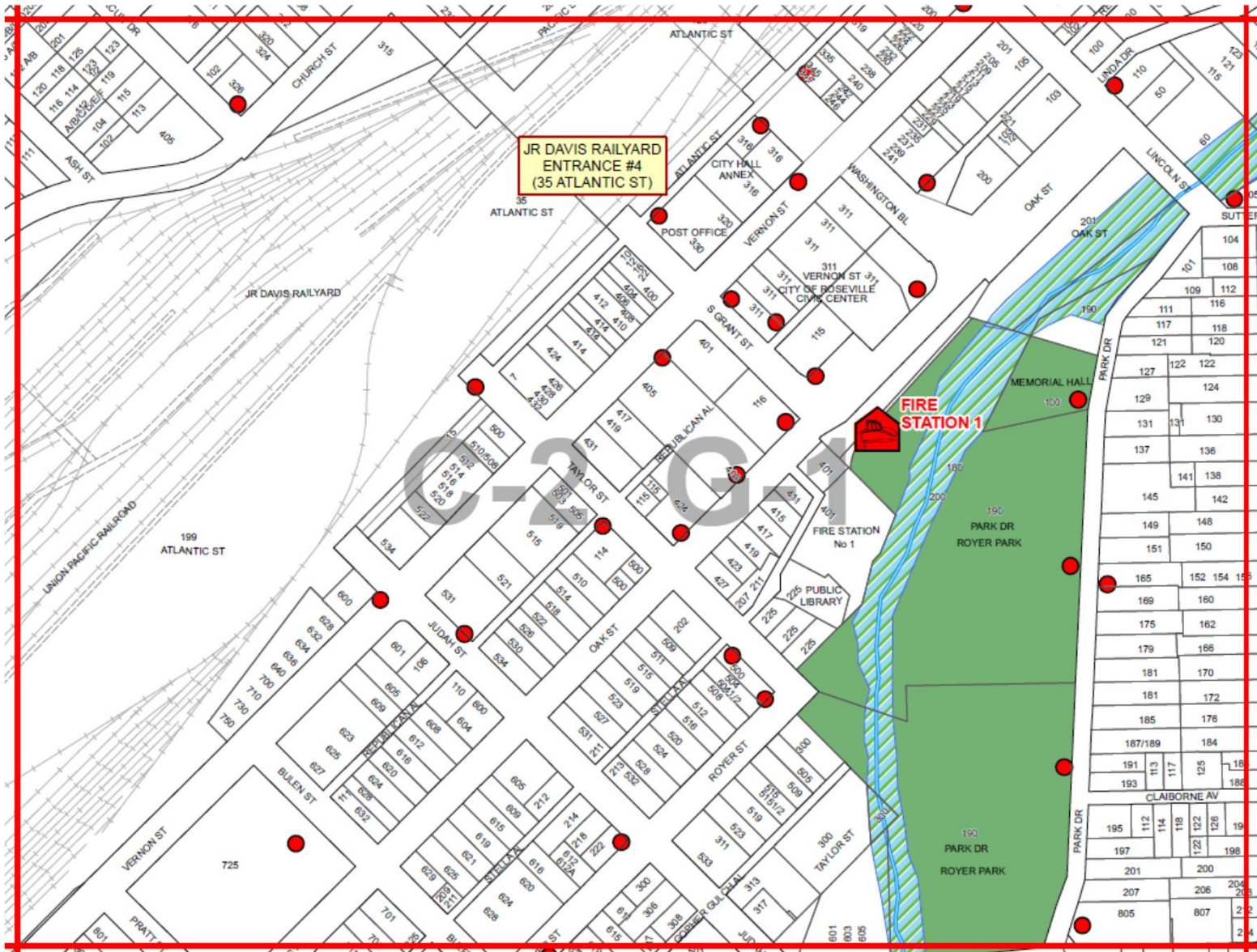
Pavement Quality Index - Current



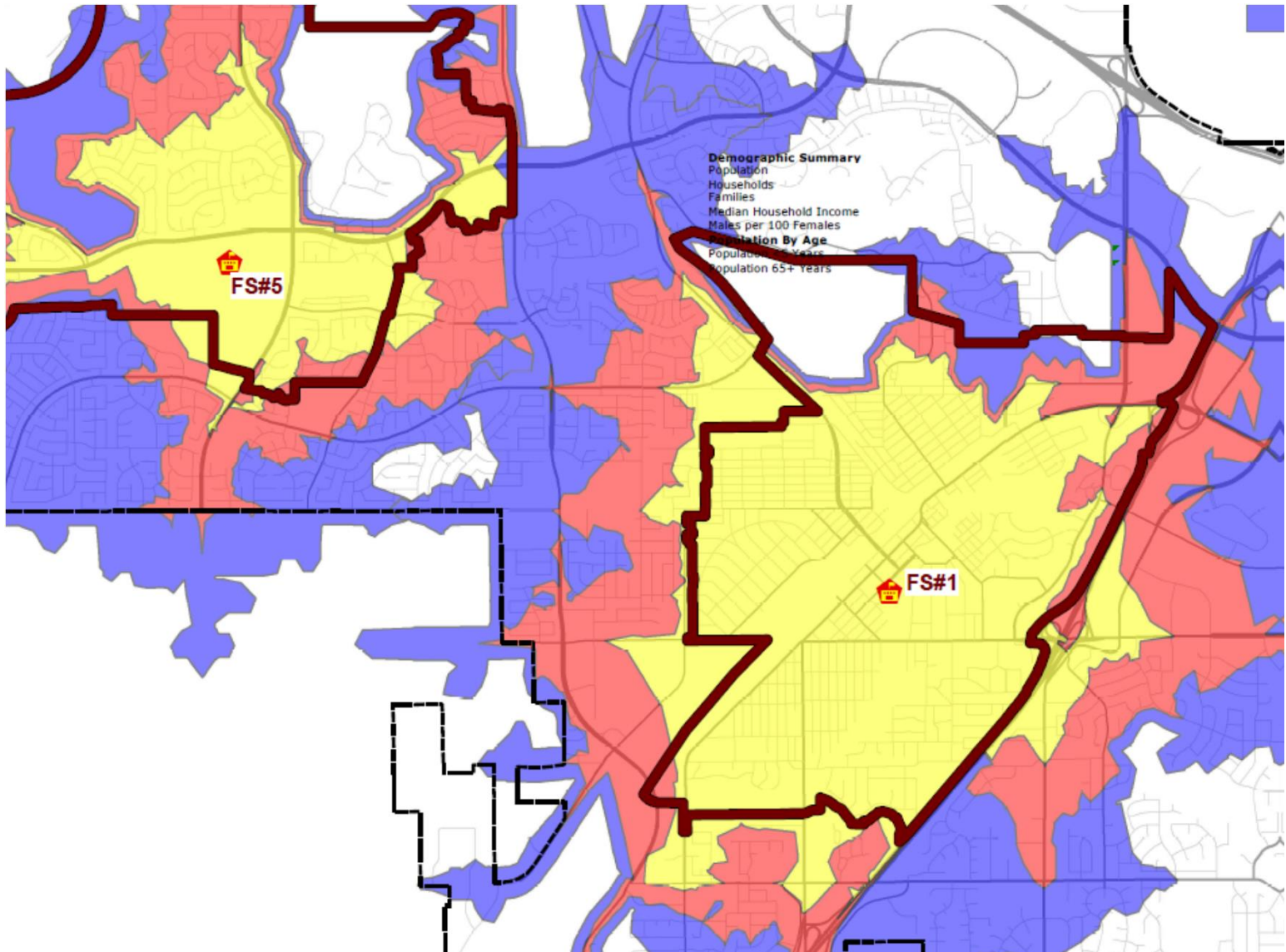
Pavement Quality Index - 2022



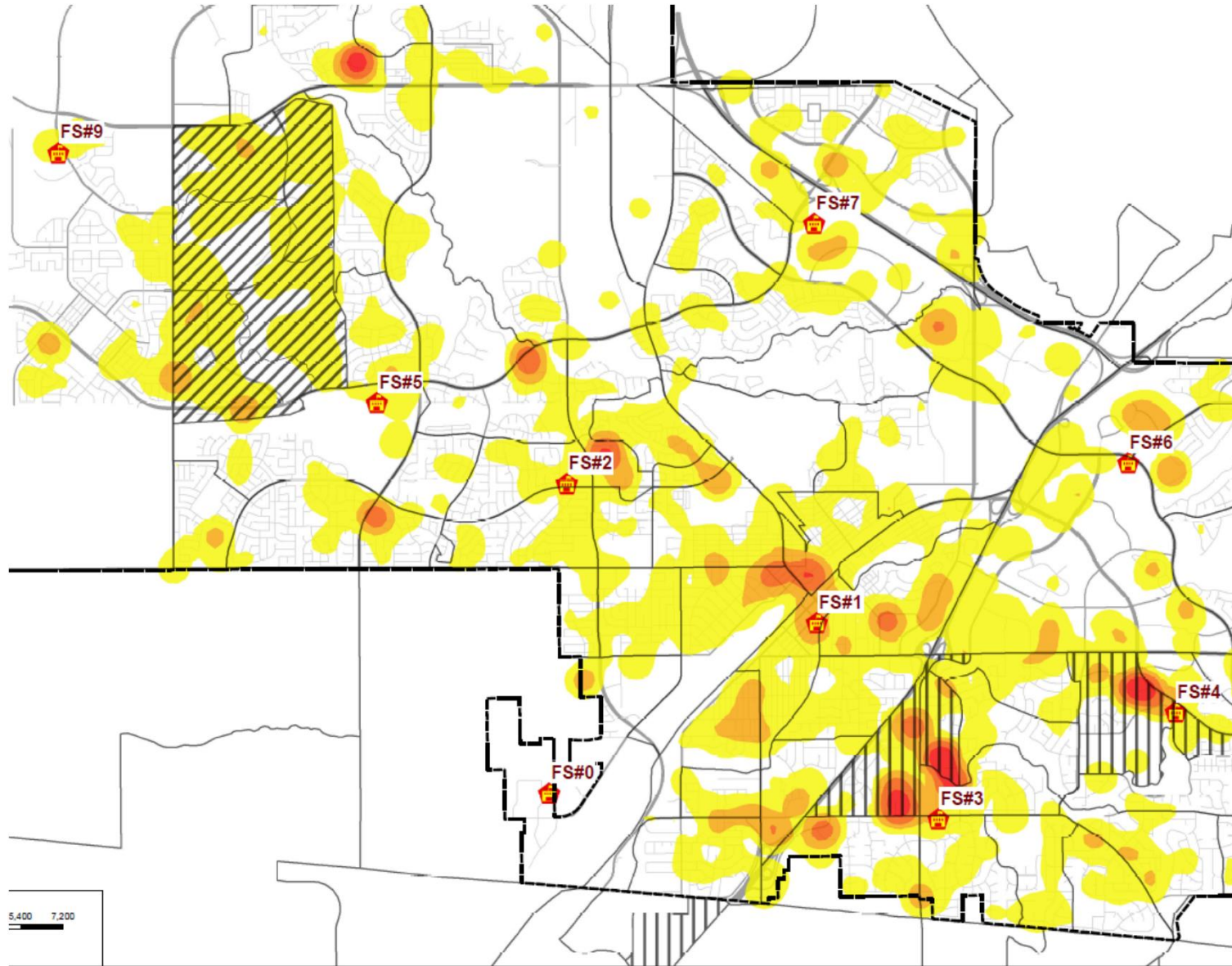
Fire Map Books



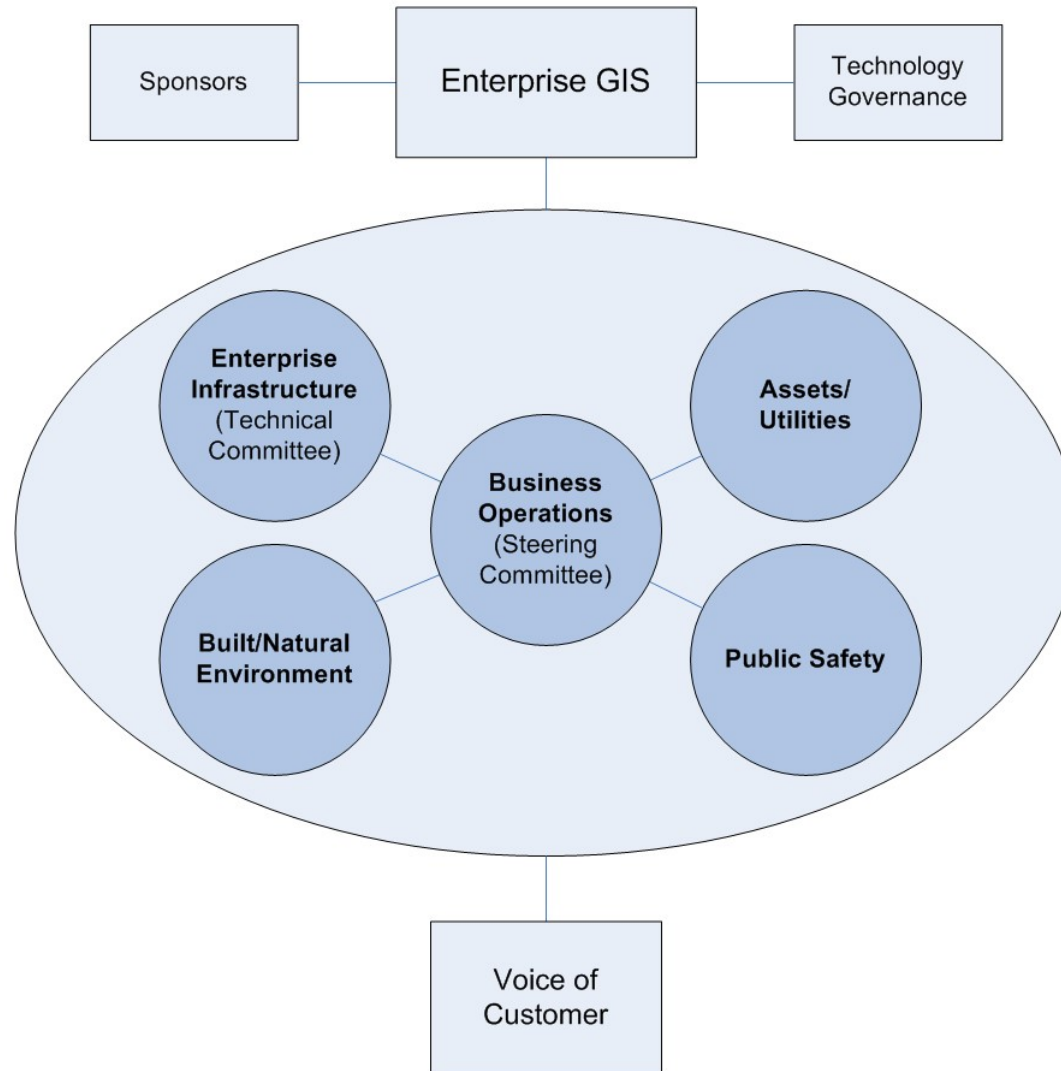
Fire Drive Time Analysis



EMS Calls



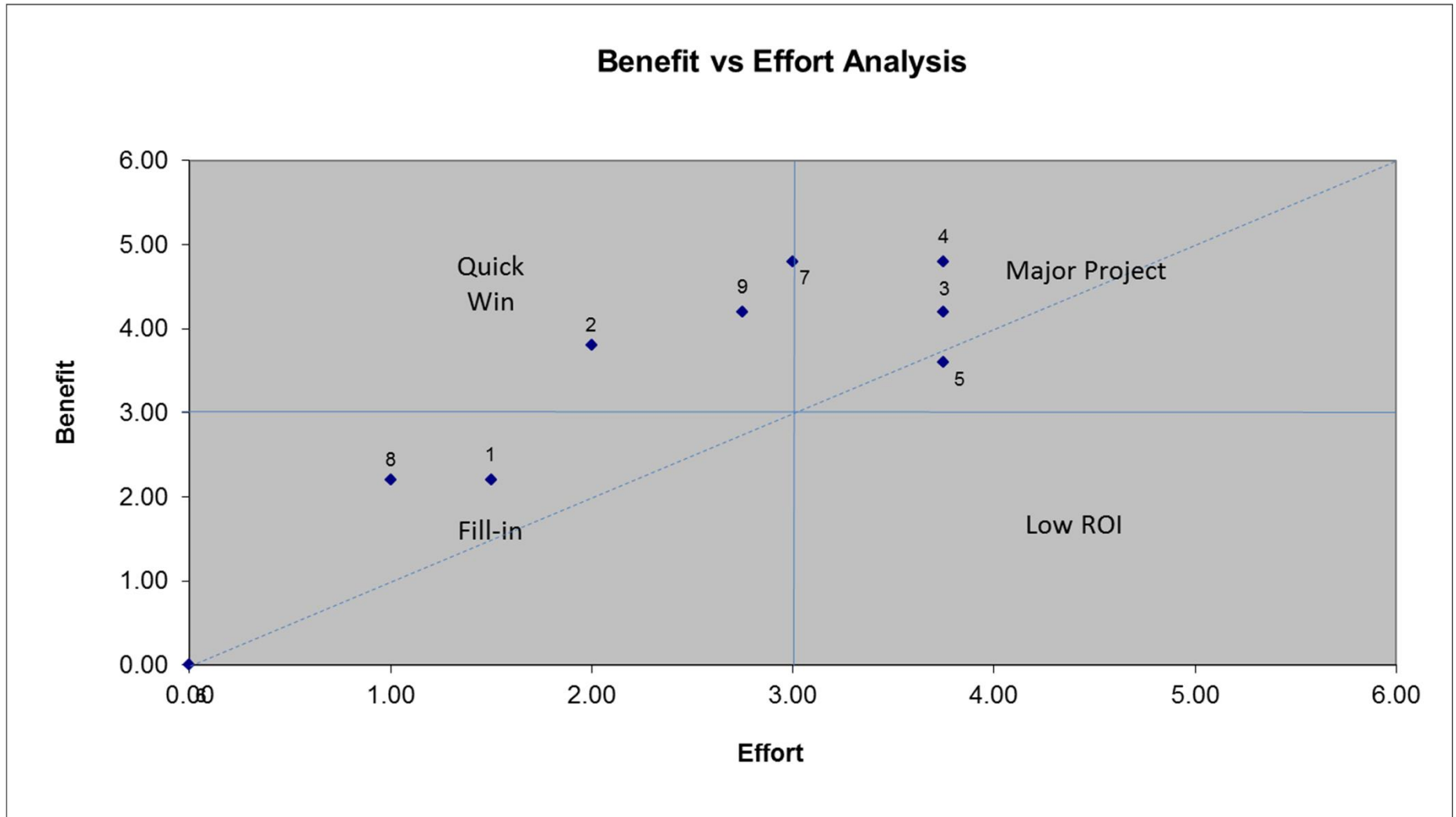
GIS Governance Structure



Strategic Planning

- Five-year strategic plans completed in 1997 and 2006
 - Business, system resource, and data needs
 - GIS Staff and organization
 - GIS system architecture
- Business Process Review (2010)
- Annual Work Plans (2011, 2012, 2013)
 - 1 to 3 year strategic look
 - Goal setting and alignment
 - Project portfolio (value based, tied to goals)
 - Staffing/budget impacts

Balanced Score Card





Lessons Learned from 2010

- Engage executive sponsors
- Build strong governance
- Grow an enterprise culture
- Develop a business-focused vision and mission
- Develop a well trained team
- Plan and align frequently



Questions?